

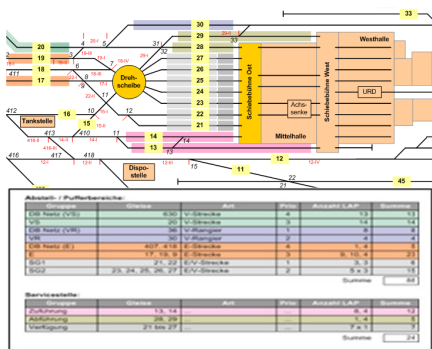
Factory Reconstruction Depot Seddin

Operation simulation and stabling optimization

Operation Simulation

The operating- and service processes of the factory reconstruction depot had to be examined accurately.

The result of this analysis should especially lead to an optimization of the stabling processes and disclose bottlenecks with regard to existing infrastructure – all that in consideration of different planning variants.



The project targets have been achieved by the project team of the Railion AG, DB ProjektBau GmbH and Contelos Engineering GmbH with great commitment and dedication.

In the initial project phase the team has purposeful determined and collected together the basics.

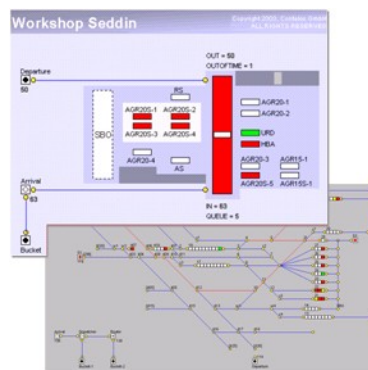
Then Contelos started on the very demanding task of model formation. The simulation demonstrated visually the parking- and service processes in consideration of different planning variants.

The presentation of the simulation results has convinced all involved. The results lead demonstrably to a parking optimization and critical bottlenecks could be recognized to deduce and initiate therefrom countermeasures early.

It was recognized by all involved that by expansion of the existing solution to an active disposition system the utilization of leased storage tracks can be totally dispensed. The logic for this has already been created within this project.

Project Targets and Overview

- Simulation of the operating and service processes considering different planning variants.
- Optimization of stabling
- Illustration the logic of service processes including work chains, times of stand and resource allocation.
- Elaboration of the control scheme of the location.
- Development of different rail images considering different planning variants.
- Compilation of the operating programs for the operational parking as well as for the technical service (actual and predicted data).
- Generating of variable parameters for unplanned repair needs, additional waiting times and times of stands of various resources.



Project Results

- Planning certainty through clear and specific project statements about resources, blockages, queues and wait times, utilization, occupancy etc.
- Significant optimization of the stabling processes as well as of operations and resources.
- Reducing of stabling areas.
- Early recognition of critical bottlenecks and propositions of appropriate measures.
- Expandability of the simulation logic to a program system for the disposition support.

Are you interested

Fon: +49 (0) 511 / 270420-0
 Fax: +49 (0) 511 / 270420-29
 info@contelos-engineering.de