

## New Operation Management Center External project management by time

### Task

The operation management center as the „heart“ of the allocation site determines decisively the quality of the providing process.

After three periods of expansion in the existing premises during the last years their capacity limits were exceeded clearly. The legally required and by the Office of Occupational Safety as well as by the EUK and FASI exhor- ted conditions could only be realized at a new site.

The required object planning was available, now we had to control timely and cost-safe the dismantling, the reconstruction and relocation in the context of assumption of management tasks including the necessary allocations.



The budget was divided into 11 work pack- ages, according to cost calculation was set on 1.1 Mio. € and finally was undercut.

The early fixed and not changeable removal date under operation conditions of rolling wheel was kept.



### Solution

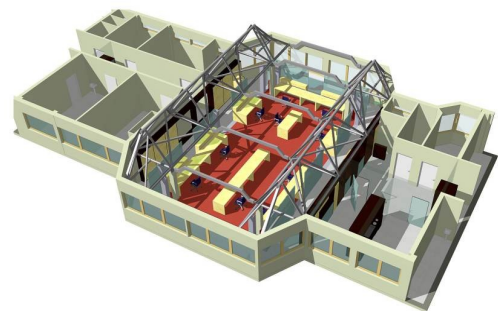
The intended tasks were:

- Project organization and coordination
- Cost controlling and monitoring
- Schedule control and monitoring
- Contracting support
- Additional order and claim management
- Final acceptance support



In the progressing project required substitute measures has been assumed in consultation with the client to guarantee the defined stand- ard in time and quality:

- Ensuring timely the contracts
- Support of the site supervision
- Central responsible for operation, pur- chase, companies, planners, site supervi- sion, removal



#### Are you interested

Fon: +49 (0) 511 / 270420-0  
Fax: +49 (0) 511 / 270420-29  
info@contelos-engineering.de